

## School Community Council

### Chair

Jon Bejarano

### Vice Chair

Tyler Standifird

### Parent Members

Britney Bills, Teresa Leavitt, Catherine Pavia, Hyeyoung Thompson & Jaime Ward

### Faculty Members

Marianne Asay, Deidra Christley  
& Matt Killpack

## PTA Executive Board

### President

Jana Allen

### Secretary

Michelle Buechner

### Treasurer

Lisa Bartholomew

### Mission

Through the unified commitment of students, staff, parents and community, the mission of Highland Elementary School is to empower students to value life-long learning and participate as competent, contributing, and responsible citizens in a changing world.

### Highland Essential Behaviors

Highland Hawks are:

- Respectful
- Responsible
- Safe
- and we Persevere

### 2021-22 Land Trust Plan

State Funding Amount: \$93,956

The School Land Trust program brings tens of millions of dollars annually to academic programs in public schools across Utah. Each school elects a school community council consisting of parents, teachers, and the principal. This council is tasked with developing a School Improvement Plan (SIP) funded by the Land Trust.

The Highland SIP focuses on improving reading, math, and science instruction. Funds are spent on professional development for teachers, aides who provide intervention and enrichment, technology that supports student learning, and curricular materials.

## Highland Elementary Stakeholder Report 2021-2022



**Matt Killpack**  
Principal

10865 N 6000 W  
Highland, UT 84003



## RISE Testing Results

Utah's Readiness Improvement Success and Empowerment assessment (RISE) is designed to measure academic success and growth. RISE tests are based on the Utah Core Standards in English language arts, mathematics, and science. These standards establish a framework for high quality instruction and help teachers ensure academic achievement for students.

2020-2021 RISE results at Highland are as follows:



### ACHIEVEMENT

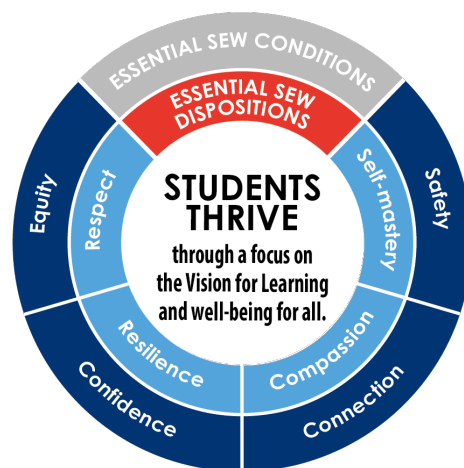
English Language Arts	70.6%
Mathematics	73.9%
Science	71.4%



Exemplary

## Return to Learn

Alpine School District has created a Social and Emotional Well-being (SEW) team that has been developing a strategic plan over the course of the past few years. The aim of the plan is not to simply teach about SEW principles, but to launch a movement where schools, families, and communities can thrive with higher levels of social and emotional well-being. As our students have returned to learn this year, the Highland staff has made efforts to help students feel safe and connected in our school. When students have the right foundation, they thrive.



## Extracurricular

A variety of extracurricular opportunities have been made available at our school this year. Students have the chance to participate in a chimes choir, band and orchestra, a chess club, and a STEM class. We are excited to offer opportunities like these as we believe that extracurricular activities have positive connections to student learning.

## Acadience Testing Results

The Acadience Reading Test is a series of short assessments given to determine a child's mastery of foundational reading skills. There are various sub-tests given depending on the grade level and time of year. The Acadience Reading Test is administered three times per year in grades K-3. The following results indicate the percentage of students in each grade who are reading at or above expected proficiency levels for the middle of the year:

Kindergarten – 84%  
First Grade – 84%  
Second Grade – 78%  
Third Grade – 84%